

# Eximius

**High Quality Architectural Ironmongery**  
By Star Supplies Hardware Ltd

## Anti-Ligature Range



Affiliate With



Members Of



**Tel: 01634 712222**

**Fax: 01634 712121**



**EXM-AL-8541-SSS**

**EXM-AL-8541-SAA**

A fully anti-ligature pull handle. 25mm dia.  
250mm long on a plate 300mm long 75mm wide.  
Available in Polished aluminium or satin stainless steel.

Alternative sizes available to special order.  
Infill plate prevents the introduction of ligatures.  
Large diameter pull handle gives sufficient grip to pull door closed. It can be fixed back to back or face fixed.



**EXM-AL-8542-SSS**

**EXM-AL-8542-SAA**

Pull handle 25mm dia. On a plate. Plate size can be made to specification.

Available in Polished aluminium or satin stainless steel.

Pull handle on plate 265 x 75mm.



**EXM-AL-8543-SSS**

**EXM-AL-8543-SAA**

35mm pull handle on plate 190mm x 65mm Or to Specification.

Available in Polished aluminium or satin stainless .

This handle was designed to prevent barricading. It offers sufficient grip to close the door but not enough for it to be used to hold te door closed. Not recommended for use where a door closer of floor spring is fitted.



**EXM-AL-8545-SSS**

**EXM-AL-8545-SAA**

170 x 150mm Flush Pull, Satin stainless steel and polished aluminium respectively.

This pull handle has passed relevant fire tests using intumescent pads. The inside of of the grip is curved to Prevent the insertion of a part at attach a ligature. There is excellent grip and it can be fitted vertically or horizontally.



**EXM-AL-8546-SSS**

**EXM-AL-8546-SAA**

100 x 150mm Flush Pull, Satin stainless steel and polished aluminium respectively.

This pull handle has passed relevant fire tests using intumescent pads. The inside of the grip is curved to Prevent the insertion of a part at attach a ligature. There is excellent grip and it can be fitted vertically or horizontally.



**EXM-AL-8547-SAA**

190mm Pull handle on a radiused plate

An anti-ligature pull handle with smooth lies which discourage attachment of ligatures whilst having a 'non institutional' Appearance. Available in Polished aluminium or nickel Plated (satin stainless steel).

Also Available Back to back

**EXM-AL-8548-SAA**



**EXM-AL-8549-SSS**

**EXM-AL-8549-SAA**

300mm Pull Handle Available in Polished aluminium or satin stainless steel. This handle has been developed to give sufficient grip to open large doors equipped with door closing devices but with minimal opportunity to attach ligatures. All handles come complete with tamperproof fittings.



**EXM-AL-8550-SSS**

**EXM-AL-8550-SAA**

A pull handle with profile cylinder hole. Length 300mm.

Available in Polished aluminium or satin stainless steel.

Ideal for use with roller bolt locks



**EXM-AL-8551-SSS**

This handle has been developed to give sufficient grip to open large doors equipped with door closing devices but with minimal opportunity to attach ligatures. All handles come complete with tamperproof fittings. SSS Only



**EXM-AL-8555-SSS**

**EXM-AL-8555-SAA**

A curved lever handle which features bolt through concealed. Fixing On the Patient side.

The lever sits on the door at a 45 degree angle and falls to vertical when pressurised.

This lever was developed to enable the less physically able to operate doors

easily but it is also a very strong handle offering an excellent resistance to ligatures.

Due to the lever handle clashing with a turn when used in conjunction with cylinder turn or key type, we advise that this handle should be used with a heavily sprung lock case.



**EXM-AL-8553-SSS**

**EXM-AL-8553-SAA**

An special anti– ligature lever handle on 63mm rose. The lever is set at a 45 degree angle. When pressure applied if falls to to 90 degrees (Vertical) causing the ligature to slip off. This lever bolts through the door so that no fixing are visible on client side of the door



**EXM-AL-8554-SSS**

**EXM-AL-8554-SAA**

An special anti– ligature lever handle on 50mm rose. The lever is set at a 45 degree angle. When pressure applied if falls to to 90 degrees (Vertical) causing the ligature to slip off. This lever bolts through the door so that no fixing are visible on client side of the door



EXM-AL-8557-SSS

EXM-AL-8557-SAA

Anti-ligature knob, Which can be grooved if required, Chamfered to allow maximum grip and ligature resistance.

Available in Polished aluminium or satin stainless steel.

**You can order all of the Anti-Ligature  
Range on-line just go to  
[www.starsupplies.co.uk](http://www.starsupplies.co.uk)**



EXM-AL-8556-SSS

EXM-AL-8556-SAA

Anti-ligature knob with double chamfer. Can be used in conjunction with anti-ligature lever handle in knob/lever combination.

Available in Polished aluminium or satin stainless steel.



**EXM-AL-8561-SSS**

**EXM-AL-8561-SAA**

Anti-ligature bathroom turn and release .  
Includes release key and anti tamper fitting.  
Available in Polished aluminium or satin  
stainless steel.

**Options**

**63mm Including Clutch with Coin Release or  
star release.**

**63mm No Clutch with Coin Release or  
release.**



**EXM-AL-8563-SSS**

**EXM-AL-8563-SAA**

Anti-ligature 10mm face fix profile  
escutcheon 50mm dia.

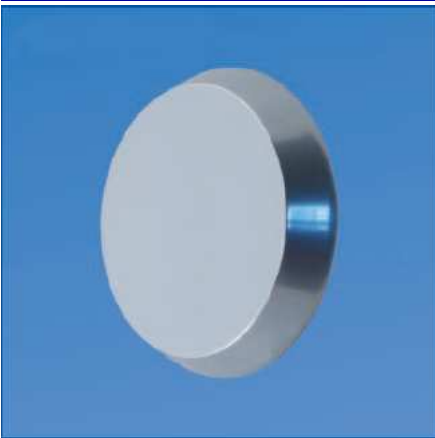


**EXM-AL-8564-SSS**

**EXM-AL-8564-SAA**

A single face fix 63mm Profile escutcheon with a chamfered edge which eliminates use as a ligature point.

Available in Polished aluminium or satin stainless steel.



**EXM-AL-8565-SSS**

**EXM-AL-8565-SAA**

63mm Blank Escutcheon with a chamfered edge which eliminates use as a ligature point.

Available in Polished aluminium or satin stainless steel.



**EXM-AL-8566-SSS**

**EXM-AL-8566-SAA**

63mm Back to back profile escutcheon with a chamfered edge which eliminates use as a ligature point.

Available in Polished aluminium or satin stainless steel.



**EXM-AL-8574-SSS**

100 X 75MM Ball race hinge Grade 13.  
Satin stainless steel.



**EXM-AL-8575-SSS**

An anti-ligature coat hook. The "hook" is fixed in a ball joint held in place by a spring loaded ball bearing. It will take the weight of a normal coat but additional weight will cause it to collapse, releasing any ligature. Available in Polished aluminium or satin stainless steel.



**EXM-AL-8572-SSS**

A mortice lock case with anti-ligature knob in satin stainless steel. The locking cylinder is above the lever for easier entry.



**EXM-AL-8573-SSS**

A mortice bathroom lock case with anti-in satin stainless steel. The Turn is above the lever for easier entry.

**For Use With**

**EXM-AL-8561-SSS**

**EXM-AL-8562-SSS**

# Window Fittings



## **EXM-AL-8567-SAA**

A simple 150mm window pull handle with chamfered sides to prevent ligature attachment.

Available in aluminium or satin stainless steel.



## **EXM-AL-8569-SAA**

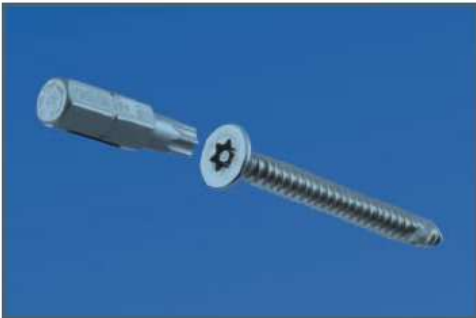
A 100mm x 22mm Slim line window pull. Available in aluminium



**EXM-AL-8571-SAA**

A 150mm Window pull with key hole  
(key supplied to operate espagnolette) .  
Available in aluminium

**All of the Anti-Ligature products are supplied complete with appropriate security fasteners**





**EXM-AL-8570-SSS**

A Handle for use with espagnolette windows. The handle is set in a ball joint and swings freely on release.. Available in satin stainless steel only.



**EXM-AL-8568-SSS**

A Handle for use with espagnolette windows. Handle is removable and can be kept on a keyring. Available in satin stainless steel only.

---

**Star Supplies Hardware Ltd**  
**Unit 6 Enterprise Business Estate**  
**Medway City Estate, Rochester**  
**Kent ME2 4LQ**  
**Tel: 01634 712222 Fax: 01634 712121**  
**Email: [Info@starsupplies.co.uk](mailto:Info@starsupplies.co.uk)**

---